



CTI Engineers, Inc.  
1122 Riverfront Parkway  
Chattanooga, TN 37402  
Phone 423.267.7613  
Fax 423.267.0603  
www.ctiengr.com

**LETTER OF TRANSMITTAL**

TO: Northwest Georgia Paving, Inc.  
Integrated Properties, LLC  
C&G Concrete Construction  
Talley Construction, Inc.

[tprice@nwgpinc.com](mailto:tprice@nwgpinc.com)  
[sstewart@integratedbuilds.com](mailto:sstewart@integratedbuilds.com)  
[cag@cagconcrete.com](mailto:cag@cagconcrete.com)  
[tfountain@talleyconstruction.net](mailto:tfountain@talleyconstruction.net)

The Blue Book  
Dodge Data & Analytics  
Builders Exchange of Tennessee  
Associated General Contractors  
ConstructConnect

[emcveigh@mail.thebluebook.com](mailto:emcveigh@mail.thebluebook.com)  
[dodge.bidding@construction.com](mailto:dodge.bidding@construction.com)  
[heather@bxtn.org](mailto:heather@bxtn.org)  
[planroom@agcetn.com](mailto:planroom@agcetn.com)  
[amelia.mcmahan@constructionconnect.com](mailto:amelia.mcmahan@constructionconnect.com)

FROM: Philip Schofield, P.E.

DATE: August 19, 2020

PROJ. NO.: G14028

SUBJECT: Addendum No. 1  
City of Ringgold  
Boynton Drive Sidewalk

PAGES: 13 pages to follow

<p><b>PLEASE RESPOND</b></p> <p>→ → → →</p>	<p><b>TO CONFIRM RECEIPT OF THIS ADDENDUM NO. 1 PLEASE SIGN AND EMAIL TO CTI</b></p> <p><a href="mailto:vvisco@ctiengr.com">vvisco@ctiengr.com</a></p>
	Company _____
	Signature _____
	Title _____
	Date _____

ID 646800

**ADDENDUM NO. 1  
CITY OF RINGGOLD, GEORGIA  
BOYNTON DRIVE SIDEWALKS**

The following changes shall be made to the Contract Documents and Specifications

**I. CLARIFICATIONS**

- A.** The City intends to award only one (1) schedule. Priority will be Schedule I. (All bidders are required to bid on Schedule I.) Additional schedules may be awarded at the City's discretion. Bidders are required to bid a minimum of one (1) schedule.

**II. CONTRACT DOCUMENTS**

- A. *Section 00 11 00, Advertisement for Bids.*** Page 00 11 00-1. In the first paragraph, line 3 and 4, DELETE the words "Thursday, August 20, 2020," and SUBSTITUTE therefor the words, "Tuesday, September 1, 2020." The bid time remains the same.
- B. *Section 00 42 00, Bid Schedule:*** DELETE Pages 00 42 00-1 through 00 42 00-9 and SUBSTITUTE therefor the attached pages 00 42 00-1.1 through 00 42 00-9.1.
- C. *Section 00 43 80, Bidder Acknowledgment of Contract Time:*** DELETE Page 00 43 80-1 and SUBSTITUTE therefor the attached Page 43 80-1.1.

**II. DRAWINGS**

- A. *Drawings 11.1 and 20.0:*** DELETE Drawings 11.1 and 20.0 and SUBSTITUTE therefor the attached Drawings 11.2 and 20.1.

August 19, 2020

CTI ENGINEERS, INC.  
/s/Philip Schofield, P.E.  
Project Manager

**BIDDER ACKNOWLEDGMENT OF CONTRACT TIME**

By signature below, Bidder acknowledges and agrees that the 135-day contract time for substantial completion of the work included in these Contract Documents is either:

- 1. Sufficient, barring changed conditions, acts of God, or abnormal weather conditions that would justify time extensions; or
- 2. Insufficient, in which case the Contractor agrees that the price bid includes an allowance for liquidated damages of adequate magnitude to cover the additional time required to complete the work.

Bidder further acknowledges and agrees to the following breakdown of the 135 days by Schedule (days to be entered by Bidder must equal 135 days).

Schedule I	_____	days
Schedule II	_____	days
Schedule III	_____	days
Schedule IV	_____	days
Total		135 days

Bidder Name \_\_\_\_\_

Signature \_\_\_\_\_

Attest:

\_\_\_\_\_

**BID SCHEDULE FOR UNIT PRICE  
BOYNTON DRIVE SIDEWALKS  
RINGGOLD, GEORGIA**

Note: Unless otherwise stated, all bid items shall be a complete installation as specified and/or shown on the Drawings.

Item No.	Description	Unit	Est. No. of Units	Unit Price	Item Total
<b>SCHEDULE I - STATION 39+45 TO STATION 33+00 (DRAWING NO. 11.2)</b>					
01 22 00	<b>Mobilization and Performance Bond</b> (Max 4.5% of Bid), Including Elevation Control, Site Layout, Utility Location, and Construction Staking	LS	1		
01 22 00b	<b>Traffic Control Devices</b> to Meet MUTCD and GDOT Requirements	LS	1		
<b>03 30 00</b>	<b>Cast-In-Place Concrete, Includes All Materials and Labor</b>				
03 30 00a	<b>Class B (3,000 psi) Concrete for Utility Crossings</b> , Including Excavation, Bedding, and Backfill in Areas Shown on the Plans and as directed by the Engineer	CY	5		
03 30 00b	<b>Class A (4,000 psi) Concrete for Culvert Crossing Structure</b> , Shown on Drawing 11, Including Excavation, Bedding, Form Work, Steel Reinforcement, Grouting, Finish Rubbing, Handrail Installation, and Site Restoration, Complete In Place as Shown in Detail on the Plans and as directed by the Engineer	LS	1		
03 30 00c	<b>Class A (4,000 psi) Concrete for Junction Structure</b> , Shown on Drawing 11, Including Excavation, Bedding, Form Work, Steel Reinforcement, Grouting, Finish Rubbing, and Site Restoration, Complete in Place as Shown in Detail on the Plans and as directed by the Engineer	LS	1		
<b>03 30 40</b>	<b>Concrete Sidewalks and Driveways, Includes All Materials and Labor</b>				
03 30 40a	<b>4-Inch-Thick Concrete for Sidewalk</b> , Class A (4,000 psi), Including Excavation, Grading, Subgrade Preparation with up to 4-inches of Base Stone, Concrete Poured and Finished, Ramps, Joints, Detectable Warning Surface, etc., Complete-in-Place	LF	350		
03 30 40b	<b>Concrete Sidewalk with Turned Down Header Curb (Less than 30" Tall) at Front or Back of Sidewalk</b> , Class A (4,000 psi), Including Saw Cutting, Excavation, Form Work, Pouring and Finishing Concrete Curb, Expansion Joints, Caulking, and Parking Lot Repair, Complete in Place	LF	300		
<b>03 30 50</b>	<b>Concrete Curb, Concrete Gutter, or Combined Curb and Gutter</b>				
03 30 50a	<b>Concrete Header Curb</b> , Class A (4,000 psi), Including Saw Cutting, Excavation, Stone Bedding, Form Work, Pouring and Finishing Concrete Curb, Expansion Joints, Caulking, and Roadway Repair, Complete in Place	LF	10		
03 30 50b	<b>Concrete Curb and Gutter</b> , Class A (4,000 psi), Including Saw Cutting, Excavation, Form Work, Pouring and Finishing Concrete, Expansion Joints, Caulking, and Asphalt Repair, Complete in Place	LF	40		
	<b>Signage</b>				
636-1	Remove and Relocate Stop Sign, Warning Sign, or Street Sign	EA	1		

Item No.	Description	Unit	Est. No. of Units	Unit Price	Item Total
<b>31 20 00</b>	<b>Earthwork</b>				
31 20 00a	<b>Unclassified Demolition/Excavation.</b> Unclassified Demolition/Excavation of Existing Roadway, Curbs, Sidewalks, Brick and Debris Required to Fully Prepare the Sidewalk Subgrade; Including Saw-Cutting, Removal and Disposal of Spoil, Cuts and Fills Where Necessary, Ditch Grading, and Re-Setting Valve Covers, and Meter Boxes	LS	1		
31 20 00b	<b>Crushed Rock Bedding Material in Excess of Standard Bedding or Leveling,</b> Not Paid in Concrete Items Where Unsuitable Soil is Encountered or Where Additional Material for Bedding or Grading is Required or as Directed by the Engineer, Including Undercut Excavation, Disposal, and Stone Placement	TN	20		
<b>31 25 00</b>	<b>Slope Protection and Erosion Control</b>				
31 25 00a	<b>Compost Filter Sock,</b> Including Installation of Posts and Removal After Site Stability	LF	200		
31 25 00b	<b>Rip Rap Stone,</b> Complete-in-Place Where Shown on Plans for Ditch Construction, Outlet Protection, Slope Protection, Check Dams, and as Directed by the Engineer. Including Excavation, Filter Fabric Installation and Stone Placement, Complete in Place	TN	120		
31 25 00c	<b>Straw Matting</b> for Slope or Ditch Stabilization, Including Staples, as Shown on the Plans or as directed by the Engineer or Owner	SY	800		
31 25 00d	Concrete Washout Structure	EA	1		
<b>32 10 00</b>	<b>Paving and Striping</b>				
32 10 00a	<b>Thermoplastic Cross Walk Striping,</b> Including 5-Inch White Traffic Stripe per GDOT Standard T-11A, Complete in Place, <b>Paid by Linear Foot Station to Station Across Drives and Roads</b>	LF	85		
32 10 00b	<b>Thermoplastic Solid Stripe for Stop Bar,</b> Including 24-Inch White Traffic Stripe per GDOT Standard, Complete in Place, <b>Paid by Linear Foot</b>	LF	12		
32 10 00c	<b>Detectable Warning Surface,</b> Installed in Concrete Sidewalk Ramp	EA	3		
<b>32 92 19</b>	<b>Seeding</b>				
32 92 19a	Temporary Seeding	LF	600		
32 92 19b	Permanent Seeding	LF	600		
<b>33 40 00</b>	<b>Storm Sewerage</b>				
33 40 00a	<b>18-inch RCP Storm Drain Pipe,</b> Including Excavation, Stone Bedding, Pipe Installation, Backfill, Complete-In-Place.	LF	48		
33 40 00b	<b>18-Inch Corrugated Plastic (CPP) Storm Drain Pipe,</b> Including Excavation, Stone Bedding, Pipe Installation, Backfill, Complete-In-Place.	LF	300		
33 40 00c	<b>18-Inch CMP/ Slotted Drain Pipe,</b> Including Excavation, Demo of Old Pipe/Structures, Stone Bedding, Pipe Installation, Backfill, Complete-In-Place.	LF	100		
33 40 00d	<b>Pre-Cast Flared End Section for 18-Inch RCP,</b> Including Excavation, Stone Bedding, Backfill, Complete-In-Place	EA	3		

Item No.	Description	Unit	Est. No. of Units	Unit Price	Item Total
33 40 00e	<b>Junction Box</b> , Including Excavation, Stone Bedding, Pipe Connections, Backfill, Concrete top, Complete-In-Place	EA	1		
<b>TOTAL SCHEDULE 1 (STATION 39+50 TO 33+00 DRAWING 11.2)</b>				\$	
<b>SCHEDULE 2 - STATION 33+00 TO STATION 22+00 (DRAWING NO.10.1)</b>					
01 22 00	<b>Mobilization and Performance Bond</b> (Max 4.5% of Bid), Including Elevation Control, Site Layout, Utility Location, and Construction Staking	LS	1		
01 22 00b	<b>Traffic Control Devices</b> to Meet MUTCD and GDOT Requirements	LS	1		
<b>03 30 00</b>	<b>Cast-In-Place Concrete, Includes All Materials and Labor</b>				
03 30 00a	<b>Class B (3,000 psi) Concrete for Utility Crossings</b> , Including Excavation, Bedding, and Backfill in Areas Shown on the Plans and as directed by the Engineer	CY	5		
<b>03 30 40</b>	<b>Concrete Sidewalks and Driveways, Includes All Materials and Labor</b>				
03 30 40a	<b>4-Inch-Thick Concrete for Sidewalk</b> , Class A (4,000 psi), Including Excavation, Grading, Subgrade Preparation with up to 4-inches of Base Stone, Concrete Poured and Finished, Ramps, Joints, Detectable Warning Surface, etc., Complete-in-Place	LF	950		
03 30 40b	<b>Concrete Sidewalk with Turned Down Header Curb (Less than 30" Tall) at Front or Back of Sidewalk</b> , Class A (4,000 psi), Including Saw Cutting, Excavation, Form Work, Pouring and Finishing Concrete Curb, Expansion Joints, Caulking, and Parking Lot Repair, Complete in Place	LF	150		
03 30 40c	<b>Concrete Sidewalk with Turned Up Header Curb at Back of Sidewalk</b> , Class A (4,000 psi), Including Saw Cutting, Excavation, Form Work, Pouring and Finishing Concrete Curb, Expansion Joints, Caulking, and Parking Lot Repair, Complete in Place	LF	40		
<b>03 30 50</b>	<b>Concrete Curb, Gutter, or Combined Curb and Gutter</b>				
03 30 50a	<b>Concrete Header Curb</b> , Class A (4,000 psi), Including Saw Cutting, Excavation, Stone Bedding, Form Work, Pouring and Finishing Concrete Curb, Expansion Joints, Caulking, and Roadway Repair, Complete in Place	LF	10		
03 30 50b	<b>Concrete Curb and Gutter</b> , Class A (4,000 psi), Including Saw Cutting, Excavation, Form Work, Pouring and Finishing Concrete, Expansion Joints, Caulking, and Asphalt Repair, Complete in Place	LF	70		
	<b>Signage</b>				
636-1	R1-1 Stop Sign	EA	1		
636-2	R1-6a Stop for Pedestrians Sign	EA	3		
636-3	Remove and Relocate Stop Sign, Warning Sign, or Street Sign	EA	1		

Item No.	Description	Unit	Est. No. of Units	Unit Price	Item Total
<b>31 20 00</b>	<b>Earthwork</b>				
31 20 00a	<b>Unclassified Demolition/Excavation.</b> Unclassified Demolition/Excavation of Existing Roadway, Curbs, Sidewalks, Brick and Debris Required to Fully Prepare the Sidewalk Subgrade; Including Saw-Cutting, Removal and Disposal of Spoil, Cuts and Fills Where Necessary, Ditch Grading, and Re-Setting Valve Covers, and Meter Boxes	LS	1		
31 20 00b	<b>Crushed Rock Bedding Material in Excess of Standard Bedding or Leveling,</b> Not Paid in Concrete Items Where Unsuitable Soil is Encountered or Where Additional Material for Bedding or Grading is Required or as Directed by the Engineer, Including Undercut Excavation, Disposal, and Stone Placement	TN	30		
<b>31 25 00</b>	<b>Slope Protection and Erosion Control</b>				
31 25 00a	<b>Compost Filter Sock,</b> Including Installation of Posts and Removal After Site Stability	LF	200		
31 25 00b	<b>Rip Rap Stone,</b> Complete-in-Place Where Shown on Plans for Ditch Construction, Outlet Protection, Slope Protection, Check Dams, and as Directed by the Engineer. Including Excavation, Filter Fabric Installation and Stone Placement, Complete in Place	TN	20		
31 25 00c	<b>Straw Matting</b> for Slope or Ditch Stabilization, Including Staples, as Shown on the Plans or as directed by the Engineer or Owner	SY	800		
31 25 00d	Concrete Washout Structure	EA	1		
<b>32 10 00</b>	<b>Paving and Striping</b>				
32 10 00a	<b>Thermoplastic Cross Walk Striping,</b> Including 5-Inch White Traffic Stripe per GDOT Standard T-11A, Complete in Place, <b>Paid by Linear Foot Station to Station Across Drives and Roads</b>	LF	268		
32 10 00b	<b>Thermoplastic Solid Stripe for Stop Bar,</b> Including 24-Inch White Traffic Stripe per GDOT Standard, Complete in Place, <b>Paid by Linear Foot</b>	LF	16		
32 10 00c	<b>Detectable Warning Surface,</b> Installed in Concrete Sidewalk Ramp	EA	10		
<b>32 92 19</b>	<b>Seeding</b>				
32 92 19a	Temporary Seeding	LF	800		
32 92 19b	Permanent Seeding	LF	800		
32 92 31	<b>Permanent Stabilization, Landscape Mulch,</b> 2-inch thick, Hard Wood, natural color, Complete-in-place in planter areas	CF	30		
<b>33 40 00</b>	<b>Storm Sewerage</b>				
33 40 00a	<b>15-inch RCP Storm Drain Pipe,</b> Including Excavation, Stone Bedding, pipe Installation, Backfill, Complete-In-Place.	LF	48		
33 40 00b	<b>Pre-Cast Flared End Section for 15-Inch RCP,</b> Including Excavation, Stone Bedding, Backfill, Complete in Place	EA	2		

Item No.	Description	Unit	Est. No. of Units	Unit Price	Item Total
33 40 00c	<b>Storm Drain Inlet/Catch Basin (Box Type on GDOT Standard Drawing 1035)</b> , Including Excavation, Stone Bedding, Structure, Frame and Grate, Backfill, Complete-In-Place.	EA	3		
<b>TOTAL SCHEDULE 2 (STATION 33+00 TO 22+00 DRAWING 10.1)</b>				\$	
<b>SCHEDULE 3 - STATION 22+00 TO STATION 11+00 (DRAWING NO. 9.1)</b>					
01 22 00	<b>Mobilization and Performance Bond</b> (Max 4.5% of Bid), Including Elevation Control, Site Layout, Utility Location, and Construction Staking	LS	1		
01 22 00b	<b>Traffic Control Devices</b> to Meet MUTCD and GDOT Requirements	LS	1		
<b>03 30 00</b>	<b>Cast-In-Place Concrete, Includes All Materials and Labor</b>				
03 30 00a	<b>Class B (3,000 psi) Concrete for Utility Crossings</b> , Including Excavation, Bedding, and Backfill in Areas Shown on the Plans and as directed by the Engineer	CY	5		
<b>03 30 40</b>	<b>Concrete Sidewalks and Driveways, Includes All Materials and Labor</b>				
03 30 40a	<b>4-Inch-Thick Concrete for Sidewalk</b> , Class A (4,000 psi), Including Excavation, Grading, Subgrade Preparation with up to 4-inches of Base Stone, Concrete Poured and Finished, Ramps, Joints, Detectable Warning Surface, etc., Complete-in-Place	LF	775		
03 30 40b	<b>Concrete Sidewalk with Turned Down Header Curb (Less than 30" Tall) at Front or Back of Sidewalk</b> , Class A (4,000 psi), Including Saw Cutting, Excavation, Form Work, Pouring and Finishing Concrete Curb, Expansion Joints, Caulking, and Parking Lot Repair, Complete in Place	LF	150		
03 30 40c	<b>Concrete Sidewalk with Turned Up Header Curb at Back of Sidewalk</b> , Class A (4,000 psi), Including Saw Cutting, Excavation, Form Work, Pouring and Finishing Concrete Curb, Expansion Joints, Caulking, and Parking Lot Repair, Complete in Place	LF	175		
03 30 40d	<b>6-Inch-Thick Concrete for Driveway Aprons</b> , Class A (4,000 psi), Including Excavation, Grading, Subgrade Preparation with minimum 4 Inches of Stone Base, Reinforcement, Concrete Poured and Finished, and Spoil Dirt Disposal, etc., Complete-in-Place	SF	240		
<b>03 30 50</b>	<b>Concrete Curb, Gutter, or Combined Curb and Gutter</b>				
03 30 50a	<b>Concrete Header Curb</b> , Class A (4,000 psi), Including Saw Cutting, Excavation, Stone Bedding, Form Work, Pouring and Finishing Concrete Curb, Expansion Joints, Caulking, and Roadway Repair, Complete in Place	LF	10		
03 30 50b	<b>6" x 6" Concrete Formed Curb</b> , Class A (4,000 psi), Including Form Work, Dowel Installation, Pouring and Finishing Concrete Curb, Complete in Place (Approximate Station 13+70 to 14+80)	LF	110		
03 30 50c	<b>Concrete Curb and Gutter</b> , Class A (4,000 psi), Including Saw Cutting, Excavation, Form Work, Pouring and Finishing Concrete, Expansion Joints, Caulking, and Asphalt Repair, Complete in Place	LF	20		



Item No.	Description	Unit	Est. No. of Units	Unit Price	Item Total
<b>Signage</b>					
636-1	R1-1 Stop Sign	EA	1		
636-2	Remove and Relocate Stop Sign, Warning Sign, or Street Sign	EA	1		
<b>31 20 00 Earthwork</b>					
31 20 00a	<b>Unclassified Demolition/Excavation.</b> Unclassified Demolition/Excavation of Existing Roadway, Curbs, Sidewalks, Brick and Debris Required to Fully Prepare the Sidewalk Subgrade; Including Saw-Cutting, Removal and Disposal of Spoil, Cuts and Fills Where Necessary, Ditch Grading, and Re-Setting Valve Covers, and Meter Boxes	LS	1		
31 20 00b	<b>Crushed Rock Bedding Material in Excess of Standard Bedding or Leveling,</b> Not Paid in Concrete Items Where Unsuitable Soil is Encountered or Where Additional Material for Bedding or Grading is Required or as Directed by the Engineer, Including Undercut Excavation, Disposal, and Stone Placement	TN	20		
<b>31 25 00 Slope Protection and Erosion Control</b>					
31 25 00a	<b>Compost Filter Sock,</b> Including Installation of Posts and Removal After Site Stability	LF	200		
31 25 00b	<b>Rip Rap Stone,</b> Complete-in-Place Where Shown on Plans for Ditch Construction, Outlet Protection, Slope Protection, Check Dams, and as Directed by the Engineer. Including Excavation, Filter Fabric Installation and Stone Placement, Complete in Place	TN	25		
31 25 00c	<b>Straw Matting</b> for Slope or Ditch Stabilization, Including Staples, as Shown on the Plans or as directed by the Engineer or Owner	SY	800		
31 25 00d	Concrete Washout Structure	EA	1		
<b>32 10 00 Paving</b>					
32 10 00a	<b>Thermoplastic Cross Walk Striping,</b> Including 5-Inch White Traffic Stripe per GDOT Standard T-11A, Complete in Place, <b>Paid by Linear Foot Station to Station Across Drives and Roads</b>	LF	140		
32 10 00b	<b>Thermoplastic Solid Stripe for Stop Bar,</b> Including 24-Inch White Traffic Stripe per GDOT Standard, Complete in Place, <b>Paid by Linear Foot</b>	LF	12		
32 10 00c	<b>Detectable Warning Surface,</b> Installed in Concrete Sidewalk Ramp	EA	6		
<b>32 92 19 Seeding</b>					
32 92 19a	Temporary Seeding	LF	850		
32 92 19b	Permanent Seeding	LF	850		
32 92 31	<b>Permanent Stabilization, Landscape Mulch,</b> 2-inch thick, Hard Wood, natural color, Complete-in-place in planter areas	CF	30		
<b>33 40 00 Storm Sewerage</b>					
33 40 00a	<b>15-inch RCP Storm Drain Pipe,</b> Including Excavation, Stone Bedding, pipe Installation, Backfill, Complete-In-Place.	LF	24		

Item No.	Description	Unit	Est. No. of Units	Unit Price	Item Total
33 40 00b	<b>Pre-Cast Flared End Section for 15-Inch RCP</b> , Including Excavation, Stone Bedding, Backfill, Complete in Place	EA	4		
<b>TOTAL SCHEDULE 3 (STATION 22+00 TO 11+00 DRAWING 9.1)</b>				\$	
<b>SCHEDULE 4 - STATION 11+00 TO STATION 0+00 (DRAWING NO. 8.1)</b>					
01 22 00	<b>Mobilization and Performance Bond</b> (Max 4.5% of Bid), Including Elevation Control, Site Layout, Utility Location, and Construction Staking	LS	1		
01 22 00b	<b>Traffic Control Devices</b> to Meet MUTCD and GDOT Requirements	LS	1		
<b>03 30 00</b>	<b>Cast-In-Place Concrete, Includes All Materials and Labor</b>				
03 30 00a	<b>Class B (3,000 psi) Concrete for Utility Crossings</b> , Including Excavation, Bedding, and Backfill in Areas Shown on the Plans and as directed by the Engineer	CY	5		
<b>03 30 40</b>	<b>Concrete Sidewalks and Driveways, Includes All Materials and Labor</b>				
03 30 40a	<b>4-Inch-Thick Concrete for Sidewalk</b> , Class A (4,000 psi), Including Excavation, Grading, Subgrade Preparation with up to 4-inches of Base Stone, Concrete Poured and Finished, Ramps, Joints, Detectable Warning Surface, etc., Complete-in-Place	LF	370		
03 30 40b	<b>Concrete Sidewalk with Turned Down Header Curb (Less than 30" Tall) at Front or Back of Sidewalk</b> , Class A (4,000 psi), Including Saw Cutting, Excavation, Form Work, Pouring and Finishing Concrete Curb, Expansion Joints, Caulking, and Parking Lot Repair, Complete in Place	LF	730		
03 30 40c	<b>Concrete Sidewalk with Turned Up Header Curb at Back of Sidewalk</b> , Class A (4,000 psi), Including Saw Cutting, Excavation, Form Work, Pouring and Finishing Concrete Curb, Expansion Joints, Caulking, and Parking Lot Repair, Complete in Place	LF	40		
<b>03 30 50</b>	<b>Concrete Curb, Gutter, or Combined Curb and Gutter</b>				
03 30 50a	<b>Concrete Header Curb</b> , Class A (4,000 psi), Including Saw Cutting, Excavation, Stone Bedding, Form Work, Pouring and Finishing Concrete Curb, Expansion Joints, Caulking, and Roadway Repair, Complete in Place	LF	20		
03 30 50b	<b>Concrete Curb and Gutter</b> , Class A (4,000 psi), Including Saw Cutting, Excavation, Form Work, Pouring and Finishing Concrete, Expansion Joints, Caulking, and Asphalt Repair, Complete in Place	LF	40		
	<b>Signage</b>				
636-1	R1-1 Stop Sign	EA	3		
636-2	Remove and Relocate Stop Sign, Warning Sign, or Street Sign	EA	1		

Item No.	Description	Unit	Est. No. of Units	Unit Price	Item Total
<b>31 20 00</b>	<b>Earthwork</b>				
31 20 00a	<b>Unclassified Demolition/Excavation.</b> Unclassified Demolition/Excavation of Existing Roadway, Curbs, Sidewalks, Brick and Debris Required to Fully Prepare the Sidewalk Subgrade; Including Saw-Cutting, Removal and Disposal of Spoil, Cuts and Fills Where Necessary, Ditch Grading, and Re-Setting Valve Covers, and Meter Boxes	LS	1		
31 20 00b	<b>Crushed Rock Bedding Material in Excess of Standard Bedding or Leveling,</b> Not Paid in Concrete Items Where Unsuitable Soil is Encountered or Where Additional Material for Bedding or Grading is Required or as Directed by the Engineer, Including Undercut Excavation, Disposal, and Stone Placement	TN	20		
<b>31 25 00</b>	<b>Slope Protection and Erosion Control</b>				
31 25 00a	<b>Compost Filter Sock,</b> Including Installation of Posts and Removal After Site Stability	LF	200		
31 25 00b	<b>Rip Rap Stone,</b> Complete-in-Place Where Shown on Plans for Ditch Construction, Outlet Protection, Slope Protection, Check Dams, and as Directed by the Engineer. Including Excavation, Filter Fabric Installation and Stone Placement, Complete in Place	TN	20		
31 25 00c	<b>Straw Matting</b> for Slope or Ditch Stabilization, Including Staples, as Shown on the Plans or as directed by the Engineer or Owner	SY	800		
31 25 00d	Concrete Washout Structure	EA	1		
<b>32 10 00</b>	<b>Paving</b>				
32 10 00a	<b>Asphalt Pavement Replacement</b> for Driveways, Parking Lots, and Streets, Trench Width Repair 4-inches Thick with 2.5-inches of 12.5 mm and 1.5-inches of 9.5 mm GDOT Mix, Including Saw-cutting, Excavation, Compacted Base Stone, Bituminous Tack/Prime Coat(s), and Asphalt Placement	TN	10		
32 10 00b	<b>Thermoplastic Cross Walk Striping,</b> Including 5-Inch White Traffic Stripe per GDOT Standard T-11A, Complete in Place, <b>Paid by Linear Foot Station to Station Across Drives and Roads</b>	LF	116		
32 10 00c	<b>Thermoplastic Solid Stripe for Stop Bar,</b> Including 24-Inch White Traffic Stripe per GDOT Standard, Complete in Place, <b>Paid by Linear Foot</b>	LF	48		
32 10 00d	<b>Detectable Warning Surface,</b> Installed in Concrete Sidewalk Ramp	EA	9		
<b>32 92 19</b>	<b>Seeding</b>				
32 92 19a	Temporary Seeding	LF	900		
32 92 19b	Permanent Seeding	LF	900		
32 92 31	<b>Permanent Stabilization, Landscape Mulch,</b> 2-inch thick, Hard Wood, natural color, Complete-in-place in planter areas	CF	30		

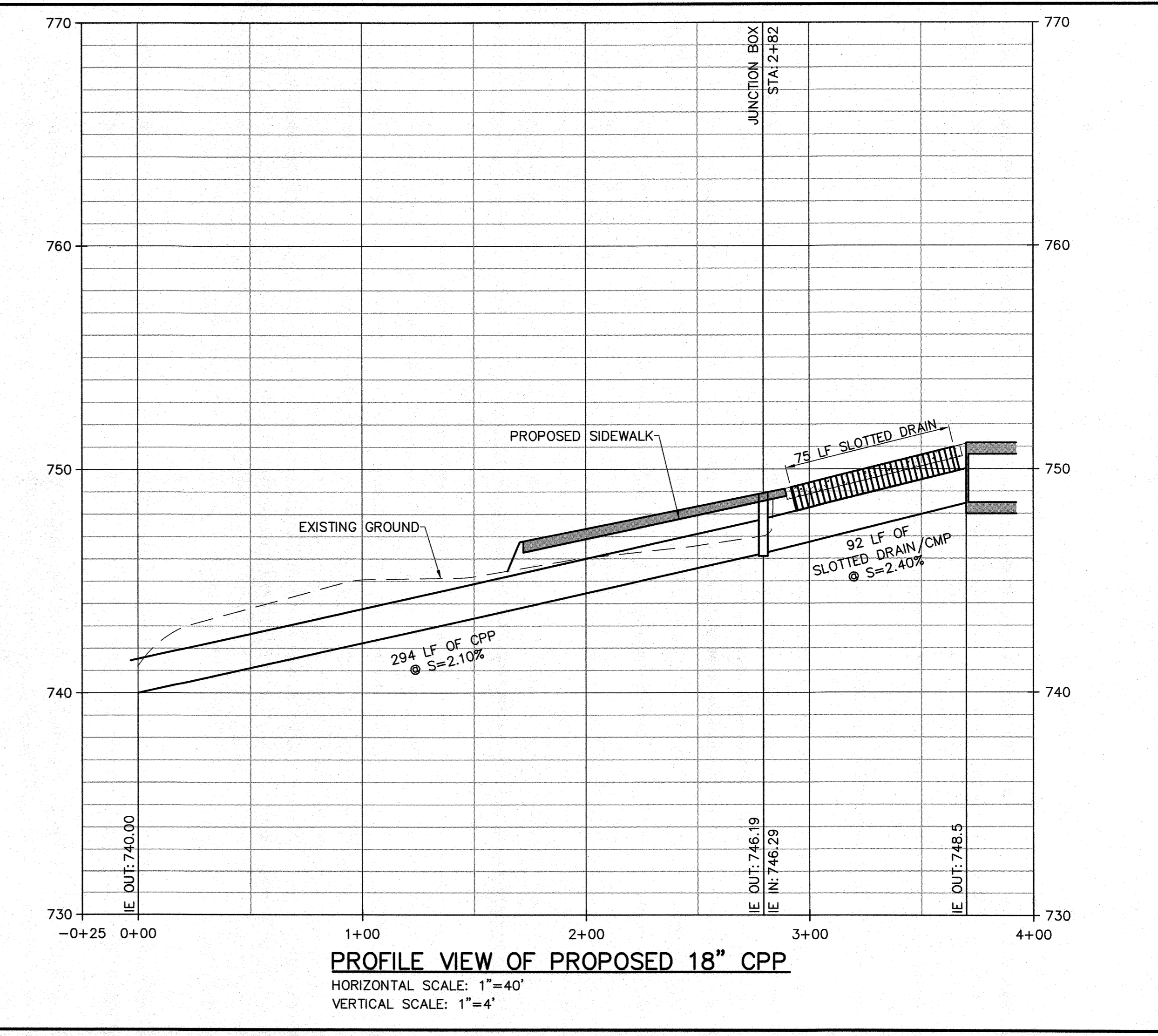
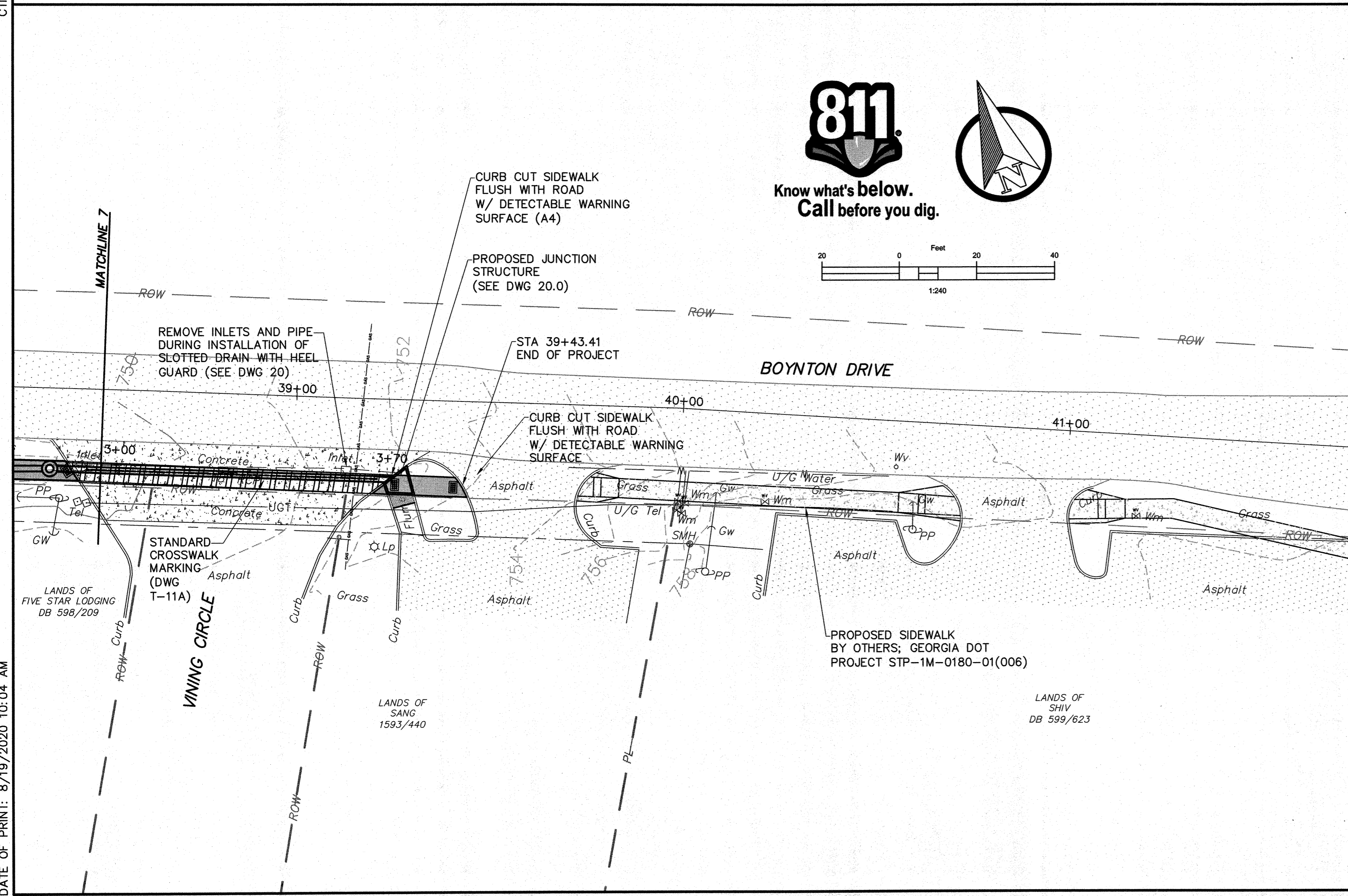
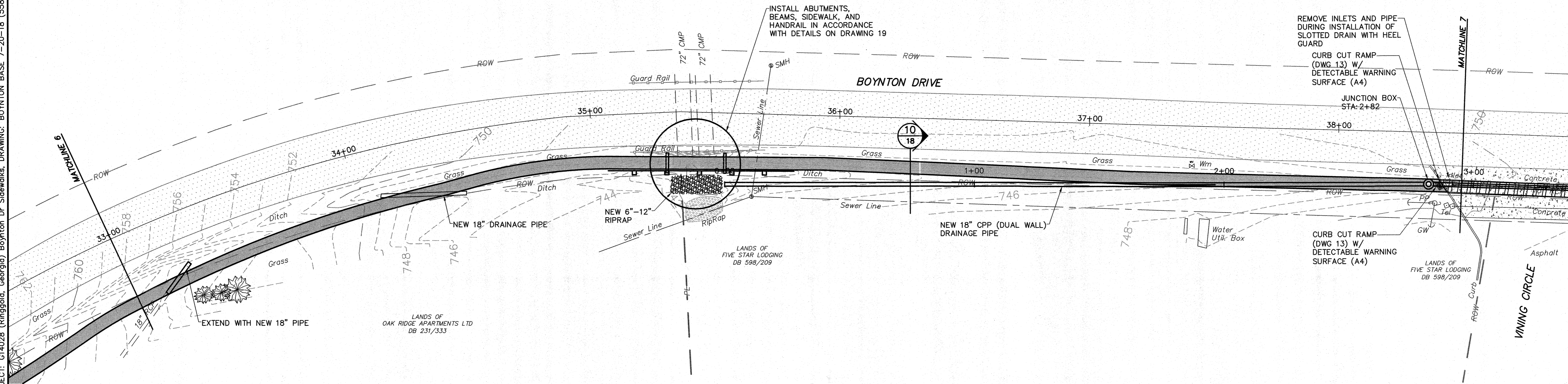
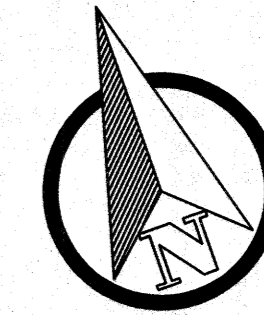
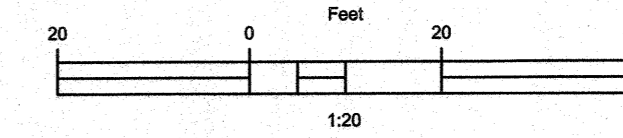
Item No.	Description	Unit	Est. No. of Units	Unit Price	Item Total
<b>33 40 00</b>	<b>Storm Sewerage</b>				
33 40 00a	<b>12-Inch RCP Storm Drain Pipe</b> , Including Excavation, Stone Bedding, Pipe Installation, Backfill, Complete-In-Place.	LF	20		
33 40 00b	<b>18-inch RCP Storm Drain Pipe</b> , Including Excavation, Stone Bedding, Backfill, Complete-In-Place.	LF	32		
33 40 00c	<b>Pre-Cast Flared End Section for 12-Inch RCP</b> , Including Excavation, Stone Bedding, Backfill, Complete in Place	EA	1		
33 40 00d	<b>Pre-Cast Flared End Section for 18-Inch RCP</b> , Including Excavation, Stone Bedding, Backfill, Complete in Place	EA	1		
33 40 00e	<b>Storm Drain Inlet/Catch Basin (Box Type on GDOT Standard Drawing 1035)</b> , Including Excavation, Stone Bedding, Structure, Frame and Grate, Backfill, Complete-In-Place.	EA	1		
33 40 00f	<b>Elbow Type Storm Drain Inlet (GDOT Standard Drawing 1035)</b> , Including Excavation, Stone Bedding, 12-inch Minimum Elbow Installation, Backfill, Complete-In-Place.	EA	1		
<b>TOTAL SCHEDULE 4 (STATION 11+00 TO 0+00 DRAWING 8.1)</b>				<b>\$</b>	
<b>SUMMARY</b>					
<b>TOTAL SCHEDULE 1 (STATION 39+50 TO 33+00 DRAWING 11.2)</b>				<b>\$</b>	
<b>TOTAL SCHEDULE 2 (STATION 33+00 TO 22+00 DRAWING 10.1)</b>				<b>\$</b>	
<b>TOTAL SCHEDULE 3 (STATION 22+00 TO 11+00 DRAWING 9.1)</b>				<b>\$</b>	
<b>TOTAL SCHEDULE 4 (STATION 11+00 TO 0+00 DRAWING 8.1)</b>				<b>\$</b>	
<b>TOTAL BID (ALL SCHEDULES)</b>				<b>\$</b>	
<b>BIDDER</b>					
					<b>DATE</b>
<b>BY</b>					
					<b>(Signature) TITLE</b>
<b>ADDRESS</b>					
<b>CITY</b>		<b>STATE</b>		<b>ZIP</b>	
<b>TELEPHONE</b>			<b>E-MAIL</b>		

CTI PROJECT: G14028 (Ringgold, Georgia) Boynton Dr. Sidewalks, DRAWING: BOYNTON BASE 7-20-18 (55827942/8/19/20 10:04AM), LAYOUT: P11

DATE OF PRINT: 8/19/2020 10:04 AM



Know what's below.  
Call before you dig.



**PROFILE VIEW OF PROPOSED 18" CPP**  
HORIZONTAL SCALE: 1"=40'  
VERTICAL SCALE: 1"=4'

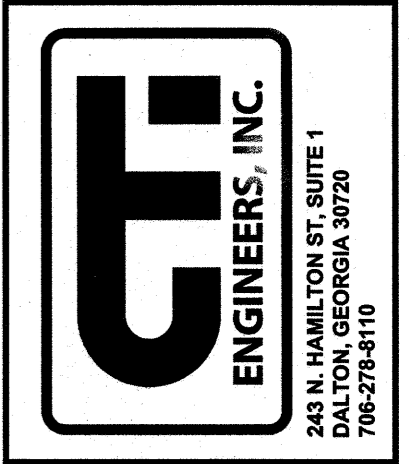
THIS DRAWING IS AN INSTRUMENT OF SERVICE FOR THE CITY OF RINGGOLD, GEORGIA. IT IS THE PROPERTY OF G&E ENGINEERS, INC. (G&E) AND SHALL BE USED ONLY FOR THE PROJECT AND SITE SPECIFICALLY IDENTIFIED HEREON. IT IS NOT TO BE REPRODUCED, COPIED, OR DISTRIBUTED TO OTHERS IN ANY FORM OR BY ANY MEANS, ELECTRONIC OR MECHANICAL, INCLUDING PHOTOCOPYING, RECORDING, OR BY ANY INFORMATION STORAGE AND RETRIEVAL SYSTEM, WITHOUT THE WRITTEN PERMISSION OF G&E ENGINEERS, INC. G&E ENGINEERS, INC. SHALL BE RESPONSIBLE FOR ANY CONSEQUENCES RELATED TO UNAUTHORIZED USE OR REUSE OF THIS DRAWING OR PORTIONS THEREOF.

NO.	DESCRIPTIONS	DATE	BY	APP'D
1	ADDED MUTCD SYMBOLS	7/20	MAB	PRS
1	ADDED SLOTTED DRAIN	7/20	MAB	PRS

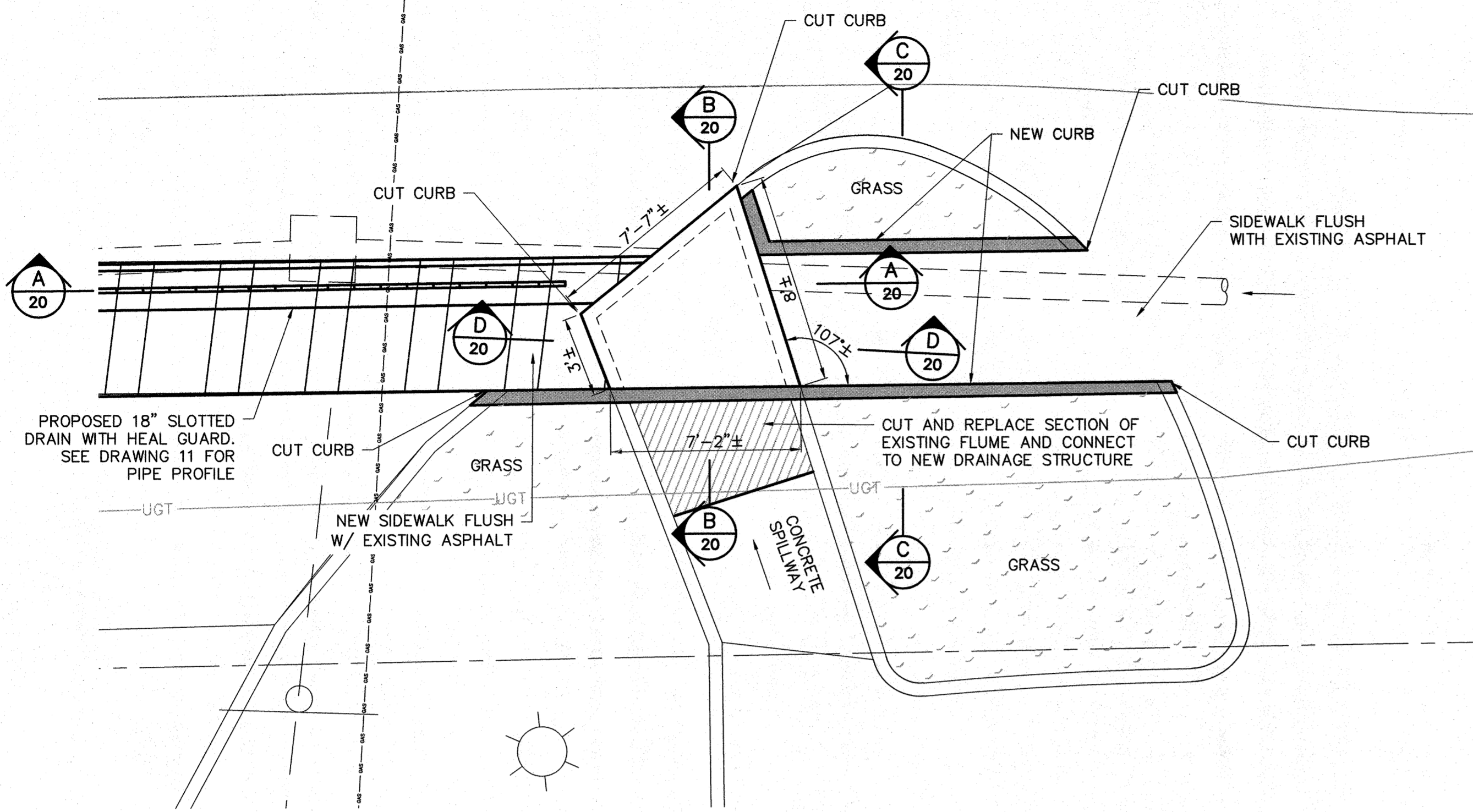
DESIGN	DESIGNED	CHECKED	APPROVED
PRS	PLW	JTS	PRS

CITY OF RINGGOLD, GEORGIA  
BOYNTON DRIVE SIDEWALKS  
PROPOSED SITE PLAN  
4 OF 4

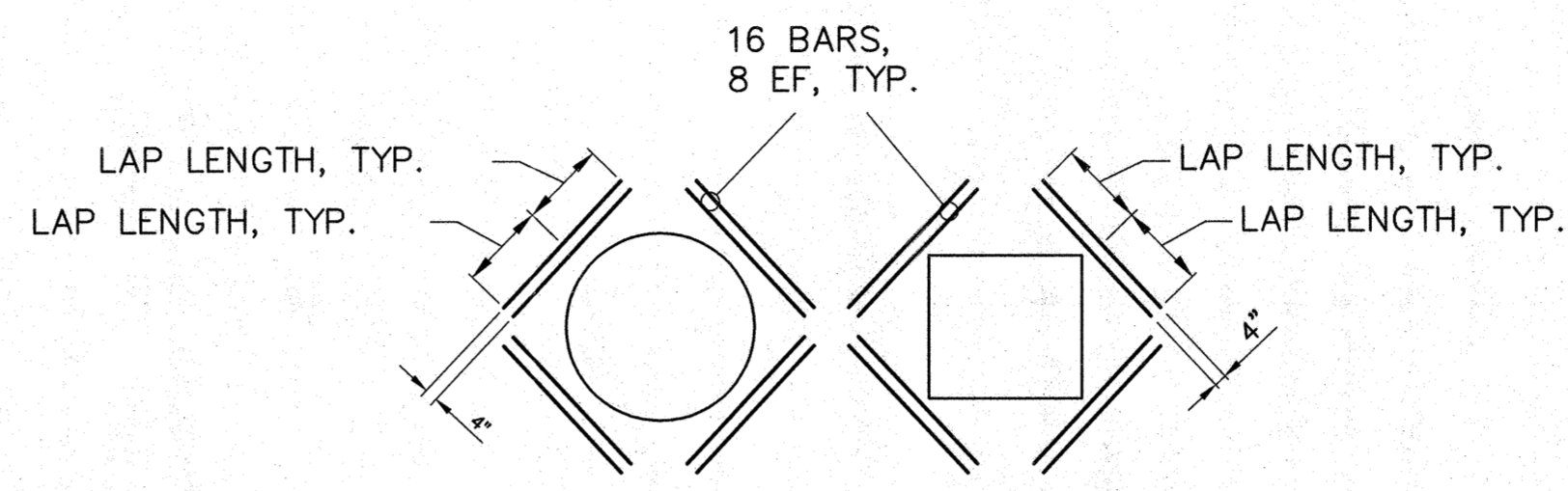


PROFESSIONAL ENGINEER  
BILLY R. SCHOFIELD  
NO. 030578  
8-17-2020

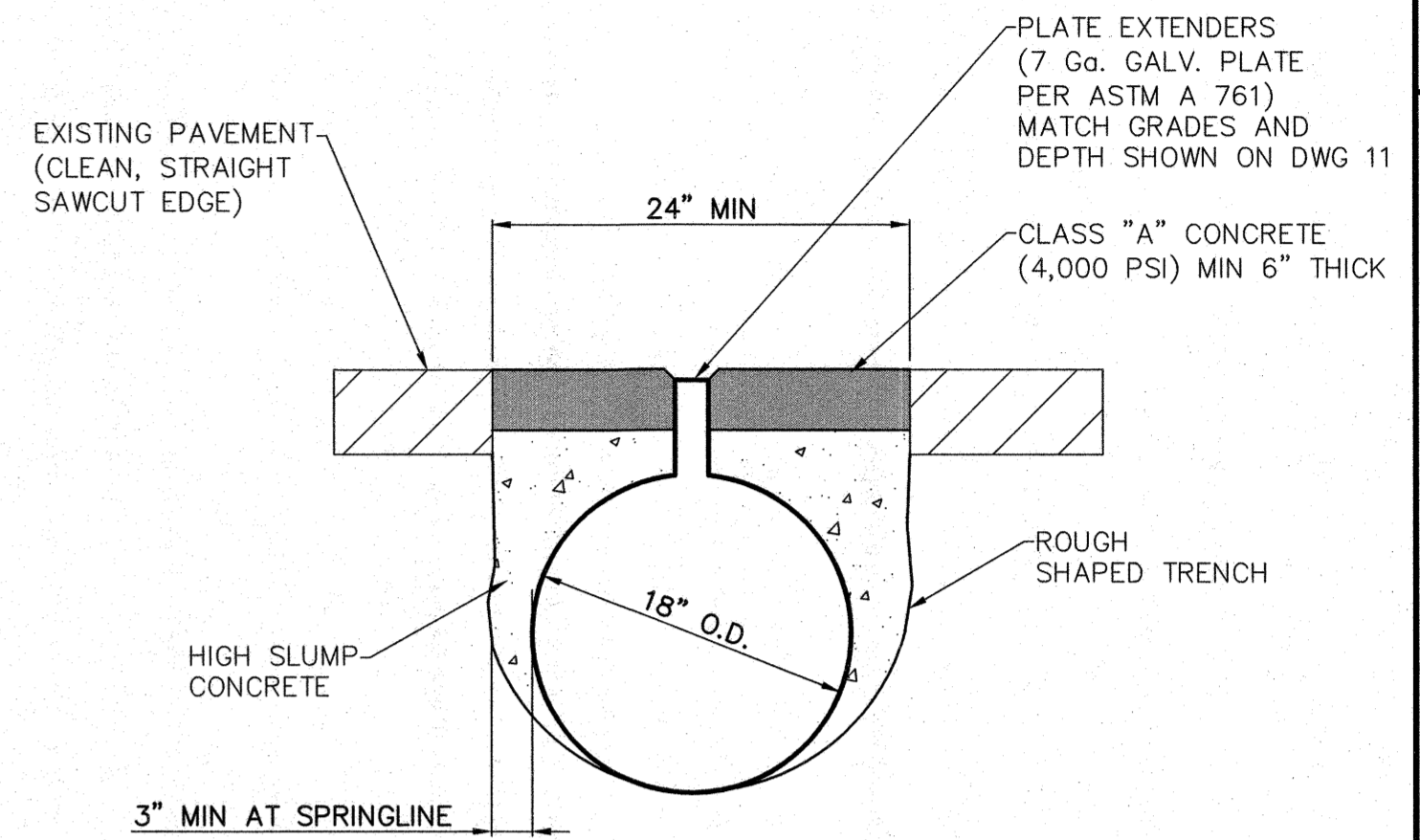
GSWCC 934  
JOB NO. G14028  
ISSUE DATE 02/27/2015  
SCALE AS NOTED  
DRAWING NO. 11.2



**PLAN**  
SCALE: 1/4"=1'-0"

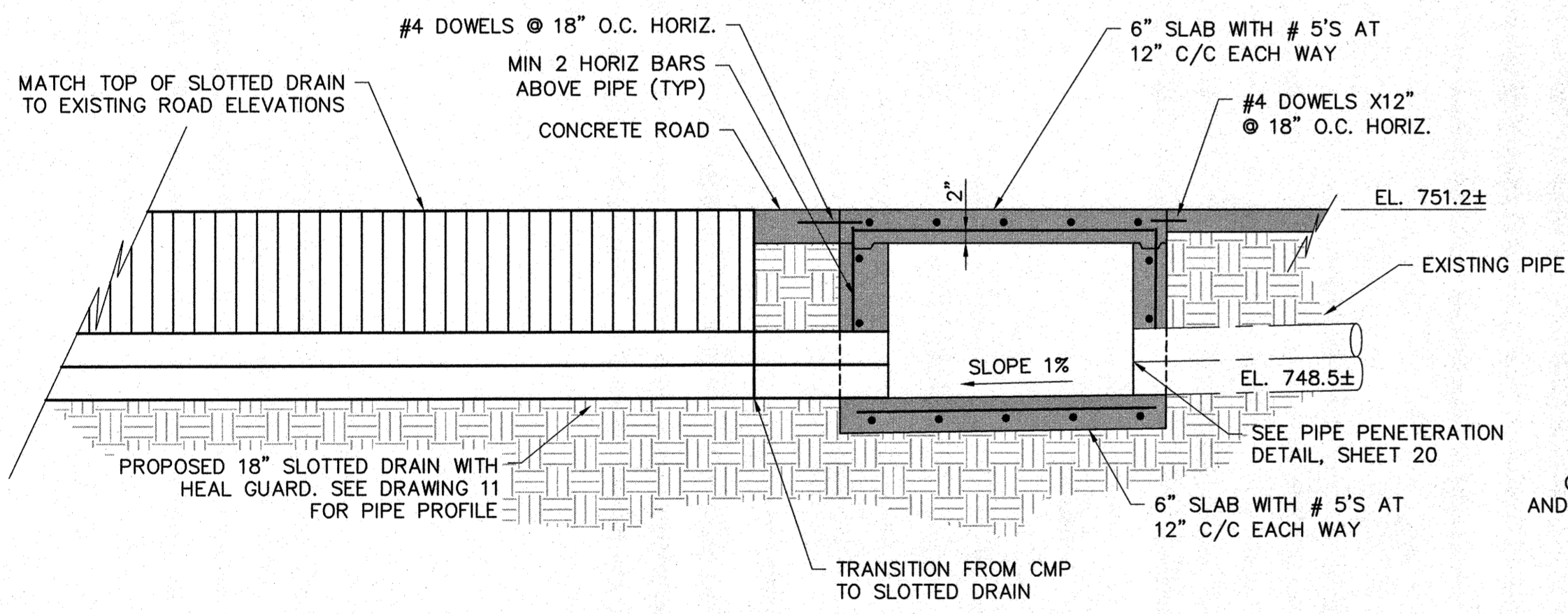


**REINFORCEMENT AT WALL AND SLAB OPENINGS OR PENETRATIONS**  
N.T.S.

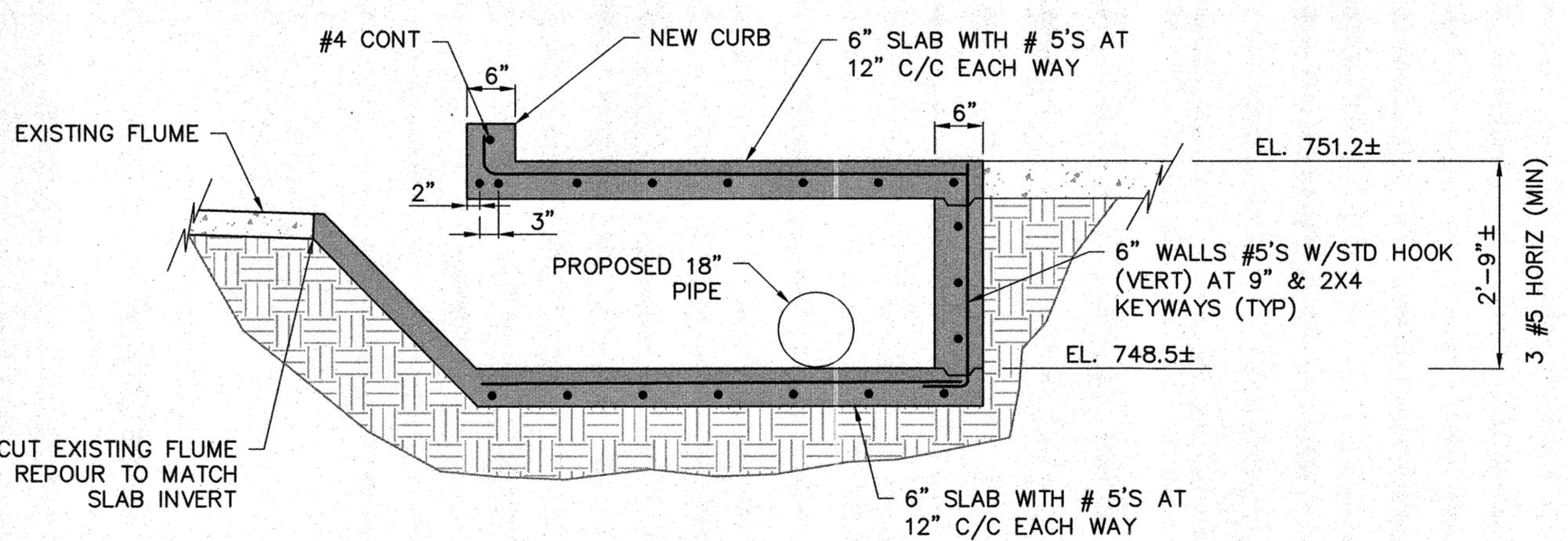


**SLOTTED DRAIN**  
N.T.S.

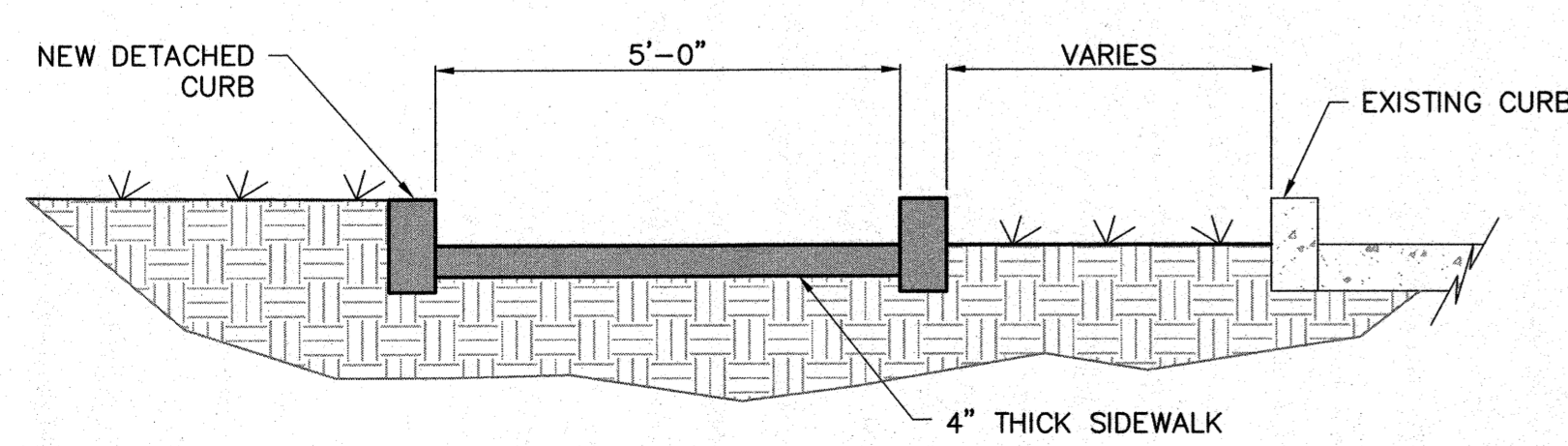
- NOTES:**
- 2-1/2" or 6" DEEP GRATING (WITH PLATE EXTENDERS) IS ACCEPTABLE FOR STANDARD HIGHWAY (H10 THROUGH H25) LOADS USING 16 GAGE PIPE. HIGH SLUMP CONCRETE BACKFILL IS REQUIRED, WITH THE ENVELOPE EXTENDING A MINIMUM OF 3 INCHES BEYOND THE SPRINGLINE, AS SHOWN ABOVE. THE HIGH SLUMP CONCRETE MUST PROVIDE A MINIMUM 750 PSI COMPRESSIVE STRENGTH.
  - DURING INSTALLATION, RECESS THE TOP OF THE GRATE 1/4" BELOW THE FINISHED GRADE OF THE PAVEMENT.
  - SLOPE TO DRAIN.



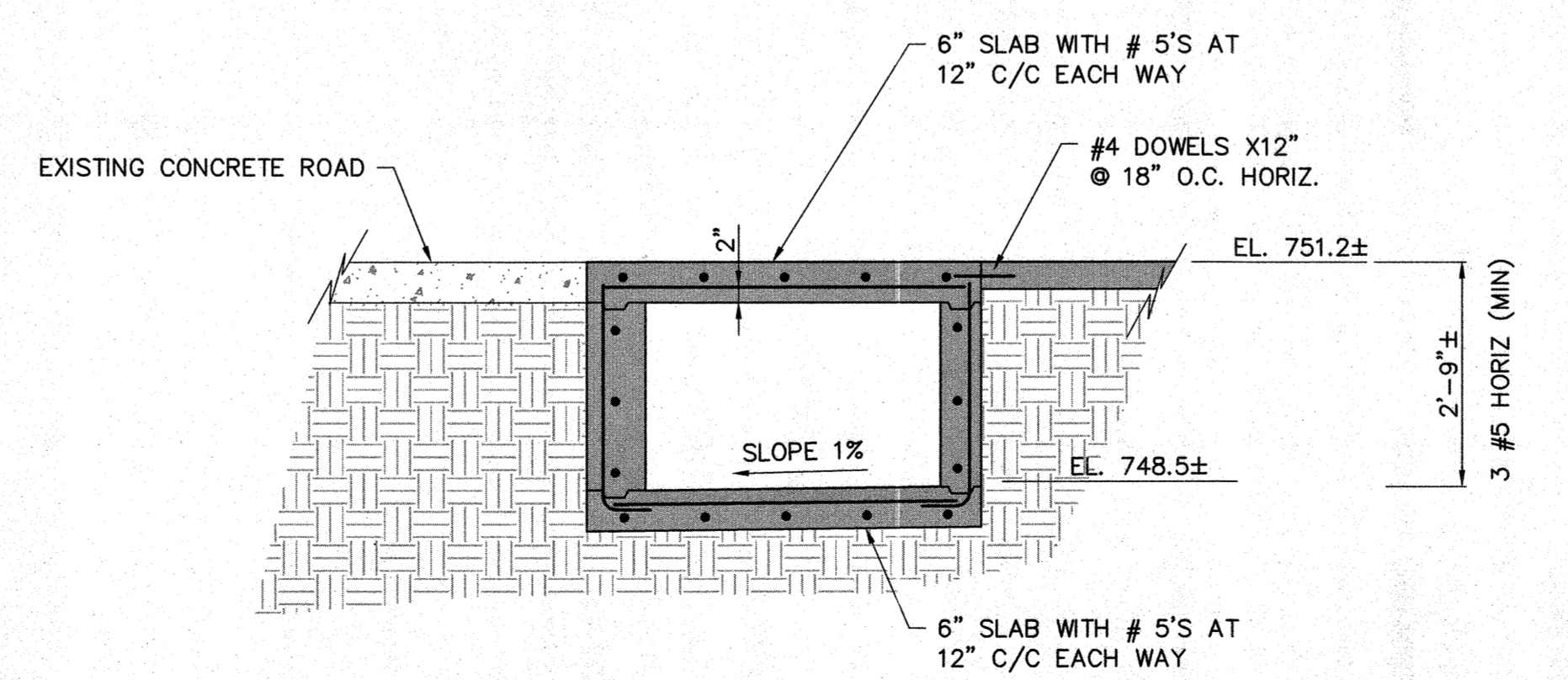
**SECTION A**  
SCALE: 1/2"=1'-0"



**SECTION B**  
SCALE: 1/2"=1'-0"

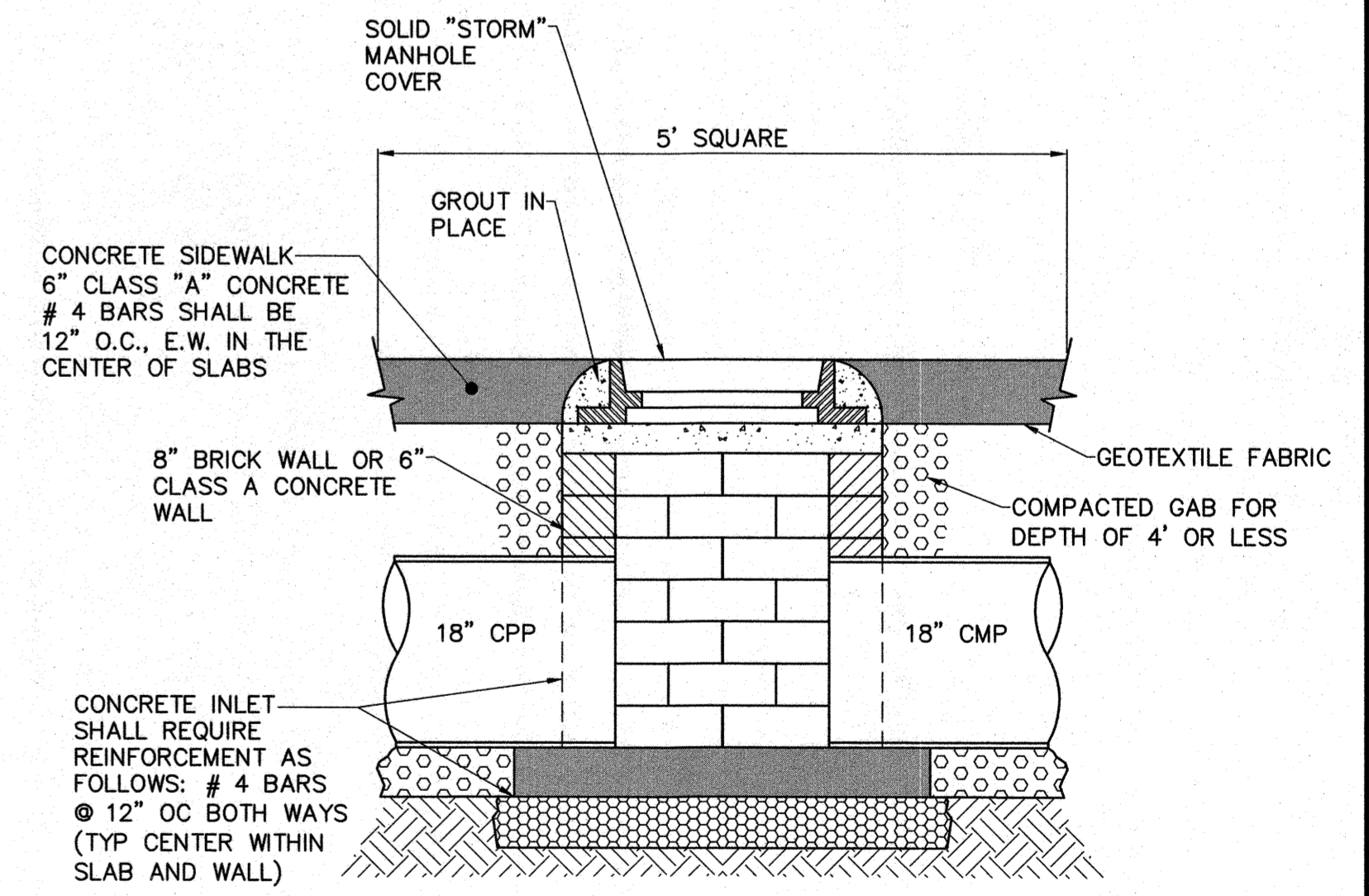


**SECTION C**  
SCALE: 1/2"=1'-0"



**SECTION D**  
SCALE: 1/2"=1'-0"

- NOTES:**
- FIELD VERIFY ALL DIMENSIONS. NEW BOX TO LINE UP WITH EXISTING CURBS.
  - LIVE LOAD FOR TOP = 90 PSF
  - THIS DRAWING IS FOR STRUCTURAL INFORMATION ONLY. WORK THIS DRAWING WITH OTHER SIDEWALK DRAWINGS IN THE SET.



**JUNCTION BOX**  
NOT TO SCALE

THIS DRAWING IS AN INSTRUMENT OF SERVICE OWNED BY CONSOLIDATED TECHNOLOGIES, INC. (CTI), WHICH SHALL BE DEEMED THE AUTHOR AND ENGINEER OF RECORD. NO PART OF THIS DRAWING SHALL BE REPRODUCED, COPIED, OR DISTRIBUTED TO ANY OTHER PARTY WITHOUT THE PRIOR WRITTEN CONSENT OF CTI. CTI IS NOT RESPONSIBLE FOR CONSEQUENCES RELATED TO THE USE OF THIS DRAWING OR PORTIONS THEREOF.

NO.	DESCRIPTION	DATE	BY	APP'D
1	ADDED SLOTTED DRAIN	8/20	PRS	KGP

DESIGN	DRAWN	CHECKED	APPROVED
KGP	SAH	PRS	KGP

CITY OF RINGGOLD, GEORGIA  
BOYNTON DRIVE SIDEWALKS  
MISCELLANEOUS DETAILS  
(SHEET 2 OF 2)



JOB NO.	G14028
DATE	2/27/2015
SCALE	AS NOTED
DRAWING NO.	20.1